

# The Saltbrush

*Single Storey*



**WATTLE CRT**

THE SALTBRUSH

RESORT FACADE



THE SALTBRUSH

HAMPTONS FACADE



THE SALTBRUSH

EXECUTIVE FACADE



THE SALTBRUSH

CLASSIC FACADE



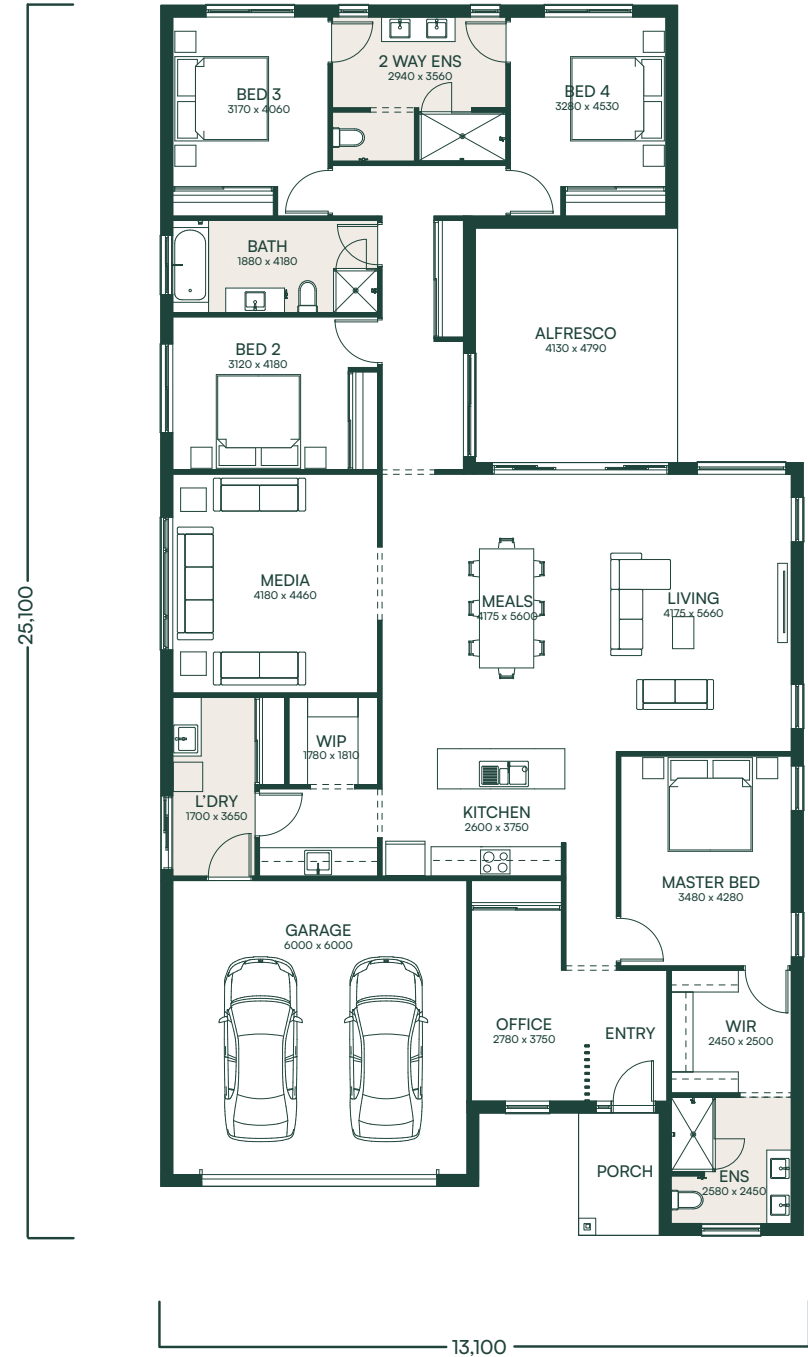
### The Saltbrush 293

🛏️ 4      🚿 3  
🚗 2      🚗 2

**LIVING**      **GARAGE**  
230.05 m<sup>2</sup>      39.39 m<sup>2</sup>

**ALFRESCO**      **PORCH**  
19.78 m<sup>2</sup>      4.12 m<sup>2</sup>

**TOTAL**  
**293.34 m<sup>2</sup>**



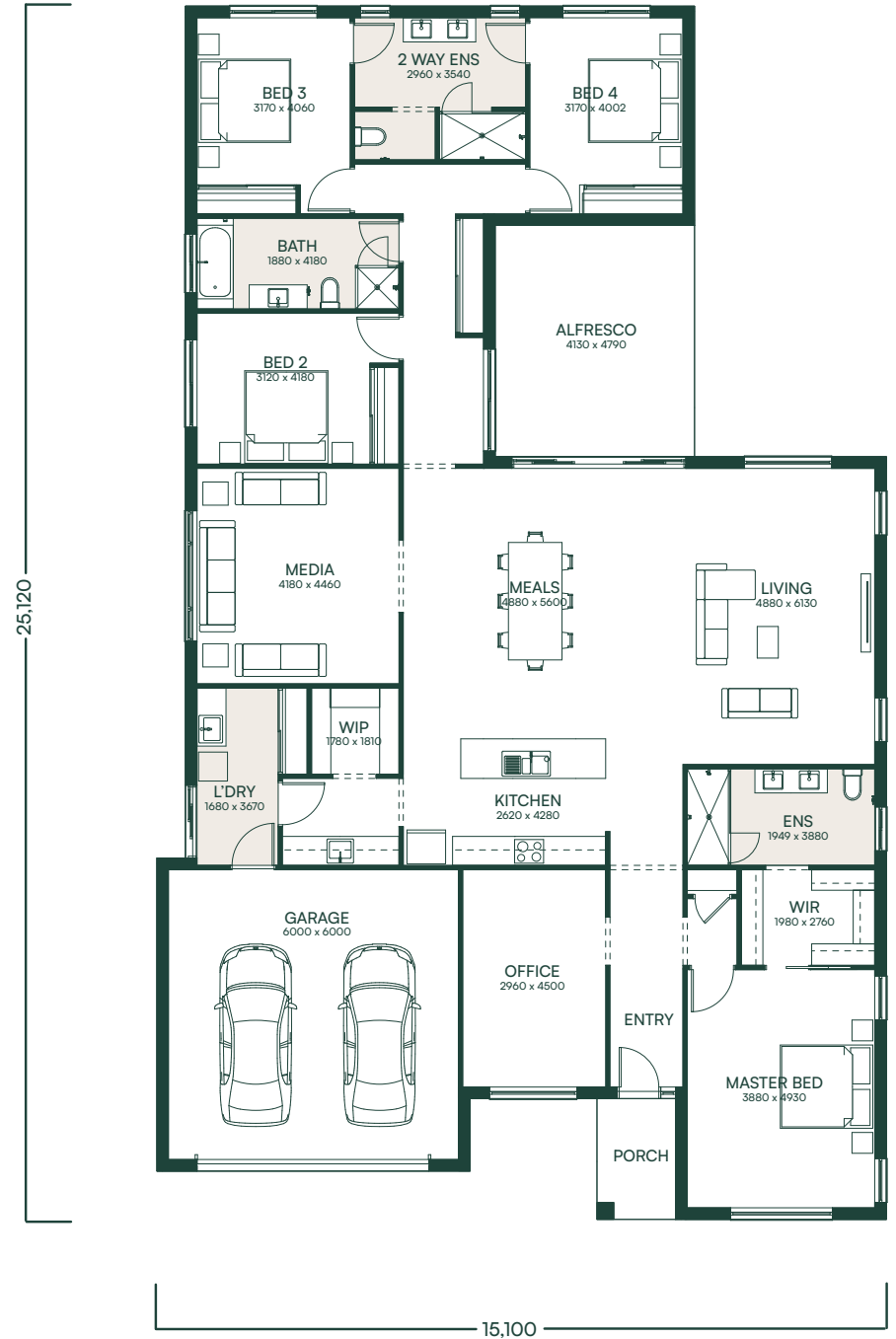
The Saltbrush 319

 4       3  
 2       2

**LIVING**      **GARAGE**  
 255.3 m<sup>2</sup>      39.65 m<sup>2</sup>

**ALFRESCO**      **PORCH**  
 19.78 m<sup>2</sup>      4.07 m<sup>2</sup>

**TOTAL**  
**318.8 m<sup>2</sup>**



# Homes built for life

**WATTLE CRT**

Images are representative only and may include features not supplied or installed by Wattle Court.  
Speak to your local Wattle Court Consultant for pricing and available colour selections.